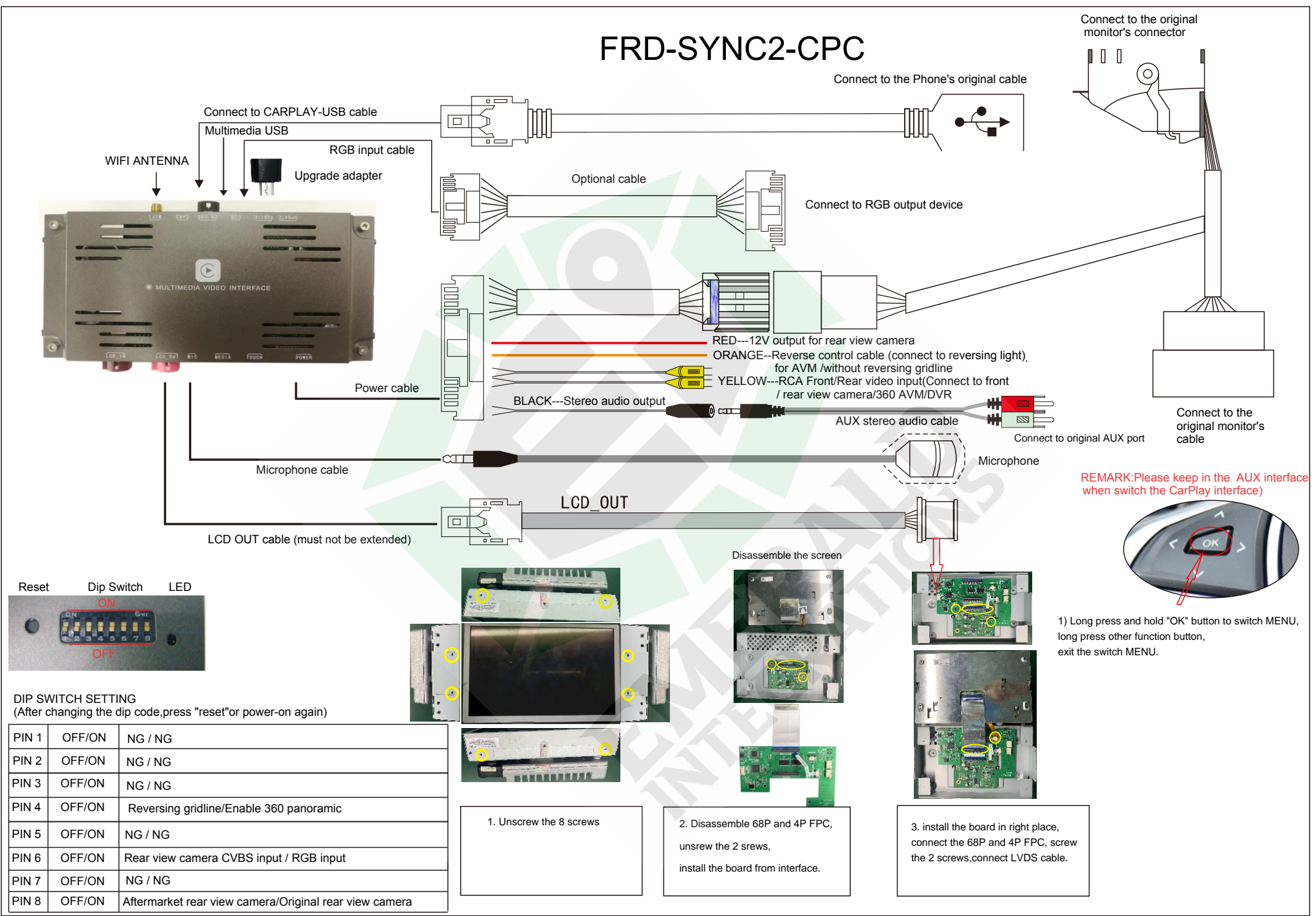


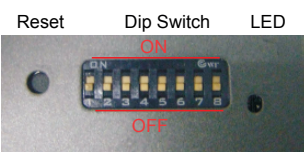
FRD-SYNC2-CPC



REMARK: Please keep in the AUX interface when switch the CarPlay interface)

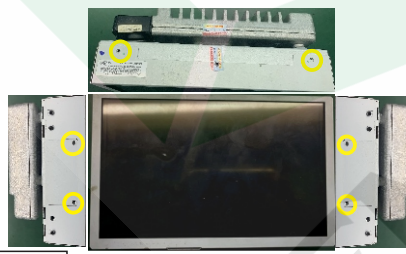


1) Long press and hold "OK" button to switch MENU, long press other function button, exit the switch MENU.



DIP SWITCH SETTING
(After changing the dip code, press "reset" or power-on again)

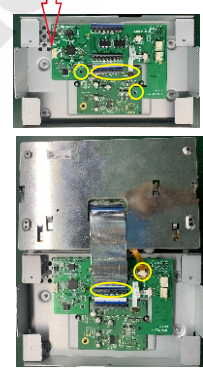
PIN 1	OFF/ON	NG / NG
PIN 2	OFF/ON	NG / NG
PIN 3	OFF/ON	NG / NG
PIN 4	OFF/ON	Reversing gridline/Enable 360 panoramic
PIN 5	OFF/ON	NG / NG
PIN 6	OFF/ON	Rear view camera CVBS input / RGB input
PIN 7	OFF/ON	NG / NG
PIN 8	OFF/ON	Aftermarket rear view camera/Original rear view camera



1. Unscrew the 8 screws



2. Disassemble 68P and 4P FPC, unscrew the 2 screws, install the board from interface.



3. install the board in right place, connect the 68P and 4P FPC, screw the 2 screws, connect LVDS cable.