



WIRELESS CARPLAY/ANDROID AUTO INTEGRATION

Chrysler, Jeep & Dodge



JEEP

Compass 2017-2020

Cherokee 2016-2020 Commander 2018-2020

Grand Cherokee 2014-2020

Dodge

Durango 2014-2017 RAM1500/2500/3500 2013-2018 Viper 2013-2017

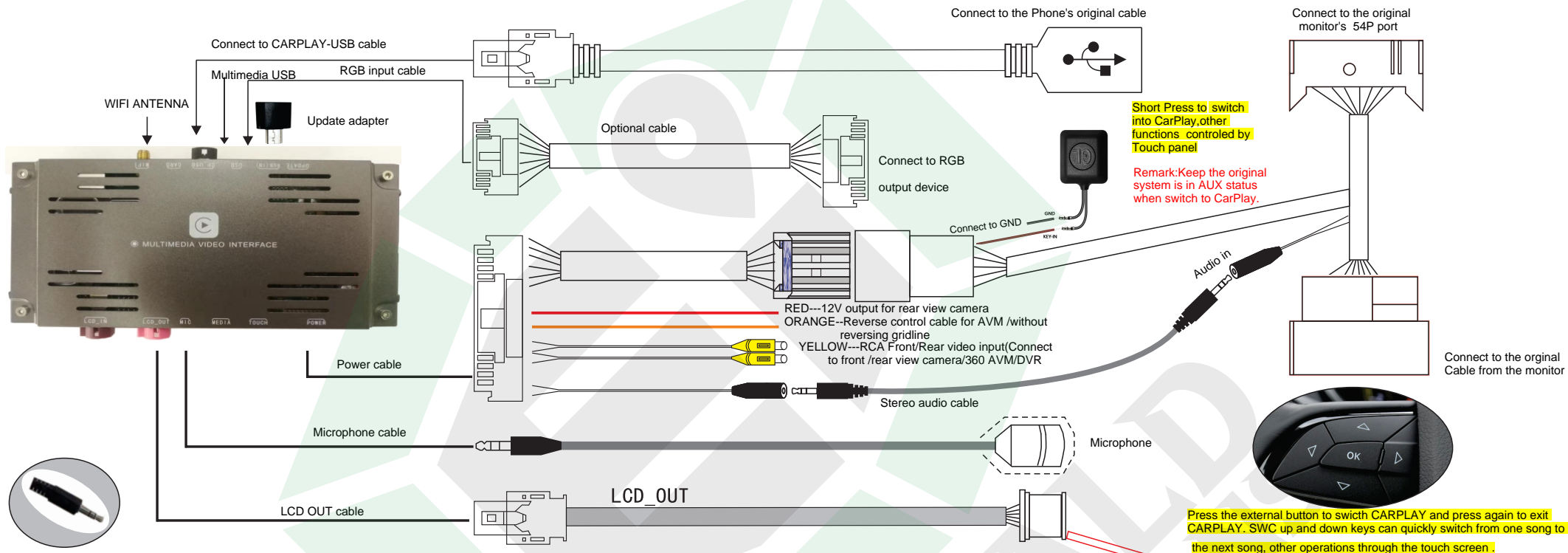
Chrysler

Chrysler 200 2015-2017 Chrysler 300 2015-2016

Model name	CJDR-UCONN-CPC
Released Date	2019-11-20
Manual Version	1.1.5
Language	English

CJDR-UCONN-CPC - wiring diagram

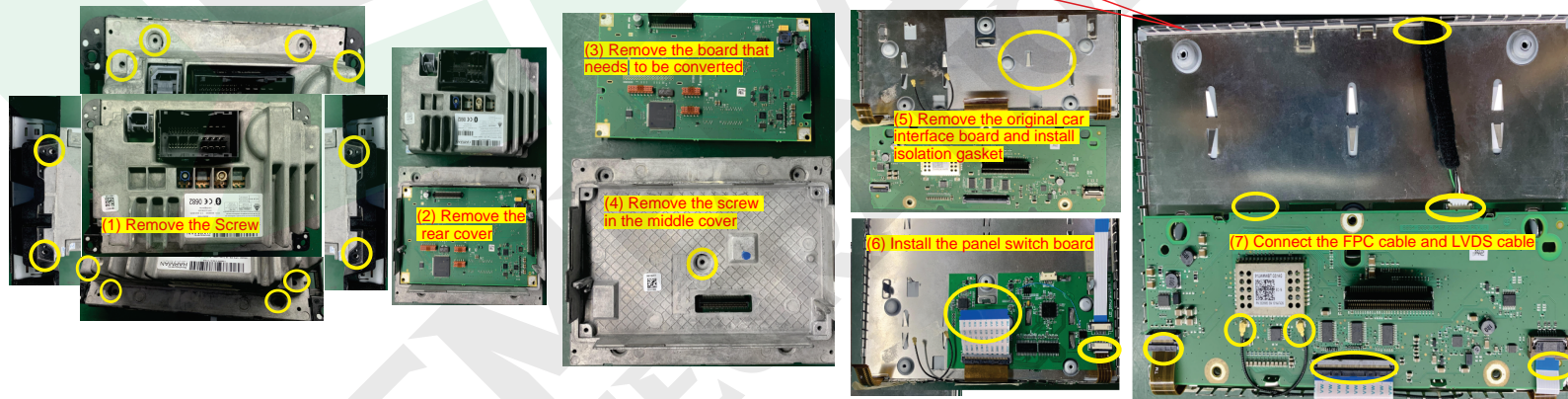
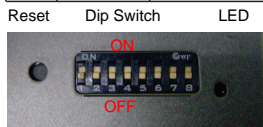
OEM Integrated Wireless Apple CarPlay / Android Auto



DIP SWITCH SETTING

(After changing the dip code, press "reset" or power-on again)

Reset	Dip Switch	LED
PIN1	OFF/ON	NG / NG
PIN2	OFF/ON	NG / Touch point coordinate correction, and then turn "OFF"
PIN3	OFF/ON	NG/ Open front view camera
PIN4	OFF/ON	Reversing gridline/Enable 360 panoramic
PIN5	OFF/ON	NG / NG
PIN6	OFF/ON	Rear view camera CVBS input / RGB input
PIN7	OFF/ON	NG / NG
PIN8	OFF/ON	After market rear view camera/Original rear view camera



1) Remove the screw/rear cover/PCB board like the pictures (1)-(4) 13PCS in total, and then you will find the FPC cable for switch board panel and touch board.

2) As shown in the figure(5)-(7) remove the original screen FPC cable, antenna and interface board, then install isolation gasket and screen adapter board, connect the 60P cable and 8P touch cable on the original screen, restore the original interface board, original FPC cable, antenna, additional screen cable and touch cable (Note that all the cable must be inserted evenly). Finally, install LVDS Cable (Pay attention to the insertion direction and outlet position), check all interfaces, install the back cover of the original car screen.

7. Safety Warning

- 1. In order to protect driving safety and avoid breaking the traffic laws, please do not watch any external video source while driving. This can be very dangerous and can be illegal.**
 - 2. DO NOT install this system in a wet or damp environment to avoid electrical shock, damage to the system or possible fire caused by a short circuit.**
 - 3. This is a backup camera system designed to give you a view of your rear. This DOES NOT ELIMINATE accidents. In case of an accident, you'll need to contact your local body shop for repairs. Car Integrations is not responsible for accidents caused.**
 - 4. We recommend professional installation when installing vehicle integration systems. Please leave it to the pros to avoid damaging your vehicles interior or electrical system.**
 - 5. After installation, please re-test by turning the vehicle off, back on and into reverse, then back off. This will assure that the system is triggering as it should at all times.**
 - 6. Make sure to re-assemble the vehicle correctly and secure the module itself to avoid the components from getting knocked loose while driving. Make sure all the cables are tucked away and secure and the module is insulated to avoid any short circuits.**
 - 7. DO NOT unplug the LVDS cables while the vehicle is ON. This may short circuit the module of the command system. It's always best to test the system before re-assembling the components. During testing, you should have the vehicle OFF and not ON or in ACC mode to avoid any short circuits.**
-

7. Camera Installation

**** BEFORE FULLY COMMITTING TO MOUNTING THE CAMERA, IT'S ALWAYS BEST TO TEST THE CAMERA ANGLE TO MAKE SURE IT'S CENTERED AND YOU HAVE THE DESIRED VIEWING ANGLE ****

1. Our cameras require 12 V of power using an ignition, accessory or our module as a power source. Do not use a reverse light as this will not be enough power to run the camera.
 2. Flush mount cameras have an RCA extension cable with power leads on both ends. That's designed to run the camera power from the rear to the front where you can connect it to a power source. Connect the RED of the camera's power harness to the RED of the RCA extension cable and run the RCA extension cable through the trim to the front. From there, connect the RCA to the module and the RED lead to a power source.
 3. Tailgate handle cameras ONLY require ONE of the RED leads to connect to a power source. There are RED leads on both ends of the RCA extension cable. You will only need to connect ONE of those leads to a power source and tape off the other lead to avoid any static interference.
-

Customer Service

At Emerald we want to make sure that you are completely satisfied, therefore we have assembled qualified associates to assist you. Our normal operating hours are Monday - Thursday 9:00 AM - 5:00 PM and Friday 9:00 AM - 4:00 PM (Pacific Standard Time).

Call us Toll Free: 844-333-3903

Email us: support@emeraldintegrations.com

Returns

30-Day Money-Back Guarantee

At Emerald Integrations, we want to make sure that you are completely satisfied. If for some reason you aren't happy with an item on your order and want to return it, we make returns and refunds extremely simple.

Any complete, like-new item returned within 30-days can be returned for a full refund less the original cost of shipping. All items or packages shipped free of charge will be subject to a \$15.00 shipping fee. If returned items are not in like-new condition, then Emerald Integrations may refuse a return or charge a restocking fee of 10% - 20%. Items not in like-new condition include, but are not limited to: items missing original item packaging, opened software or media items, used items, installed items, abused or physically damaged items, items missing parts, items damaged due to improper return shipping, items with a different serial number or defaced serial number, pre-cut wire, made-to-order items and special order items. All returns must be shipped back in a shipping carton, items cannot be shipped back in product boxes. Should you have any questions about our return procedure, please don't hesitate to contact us.

Return Disclaimer

Any unauthorized, improperly packaged, or non-insured packages will be returned to sender. Items that show signs of wear or have been, scratched, altered, or damaged in any way cannot be accepted for return

Warranty

Emerald Integrations understands that there are minor chances that electronics can fail and defects happen, in the event that this occurs, Emerald Integrations is here to help you quickly resolve your defect for a full year of 1-Year Warranty Coverage. Unlike others who push you to a manufacturer service center that can be slow and unresponsive, we're here to help with the repair or replacement you need. To begin the process, follow the instructions on the returns page at www.emeraldintegrations.com/returns.

The terms of the warranty are subject to the specific manufacturer and all expressed and implied warranties are provided solely by the manufacturer. Every item approved for a warranty claim is inspected by our team of qualified experts and professionally tested.

Emerald Integrations is a retail and wholesale distributor of vehicle electronic components, specializing in car safety. Emerald tests each product individually to ensure optimal performance and is NOT responsible for any negligence or damages caused by the installation process. Should a customer request assistance in finding an installer, Emerald holds no liability for any installers recommended by Emerald, it's employees or affiliates.