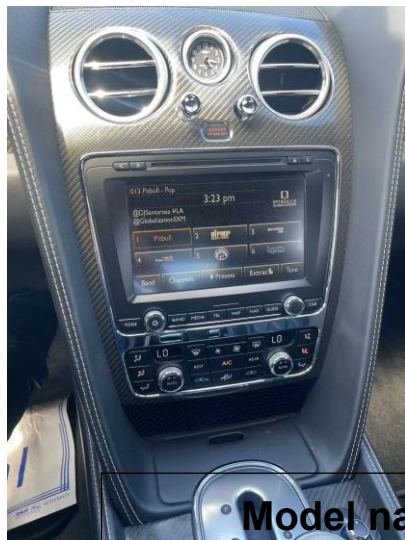




## WIRELESS CARPLAY/ANDROID AUTO INTEGRATION

### Bentley / Phaeton



#### **BENTLEY**

**Continental GT - 2010-2018**

**Flying Spur - 2010-2018**

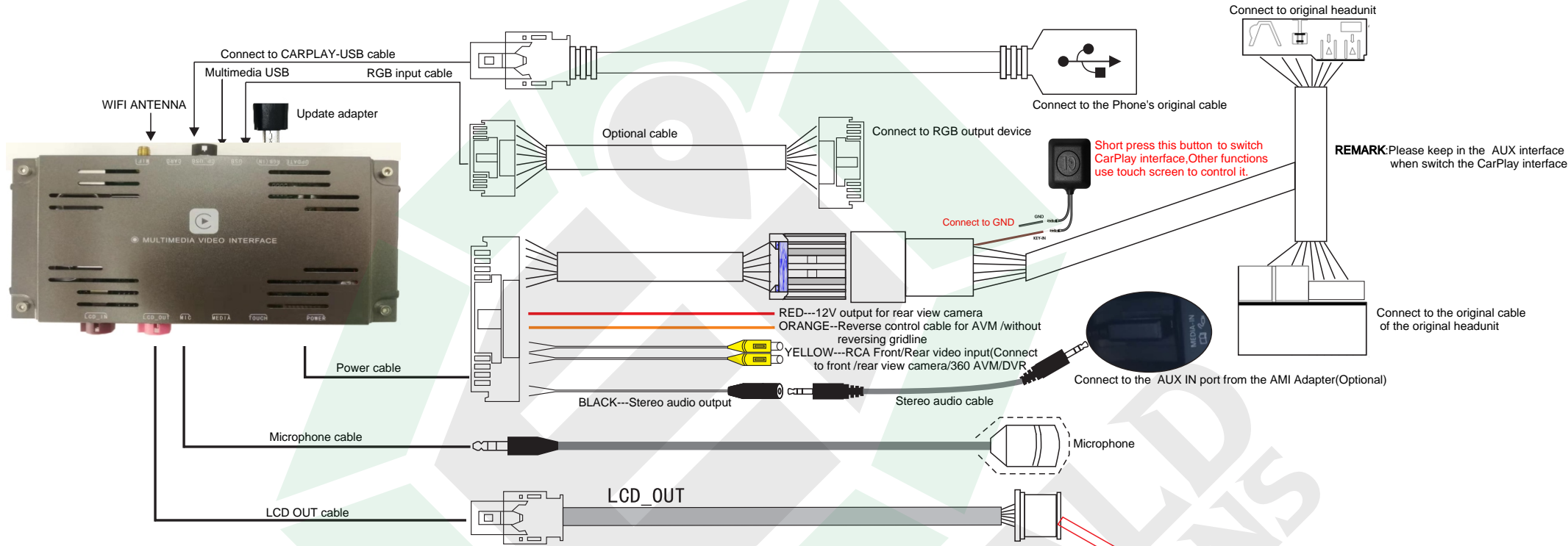
#### **Phaeton**

**Phaeton (GP3 / GP4) - 2010-2016**

<b>Model name</b>	<b>BENT-CPC</b>
<b>Released Date</b>	<b>2019-11-20</b>
<b>Manual Version</b>	<b>1.1.5</b>
<b>Language</b>	<b>English</b>

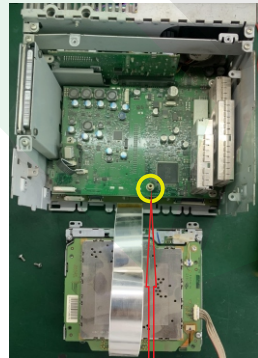
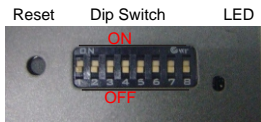
# BENT-CPC - Wiring Diagram

OEM Integrated Wireless Apple CarPlay / Android Auto

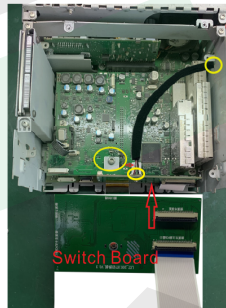


DIP SWITCH SETTING  
(After changing the dip code, press "reset" or power-on again)

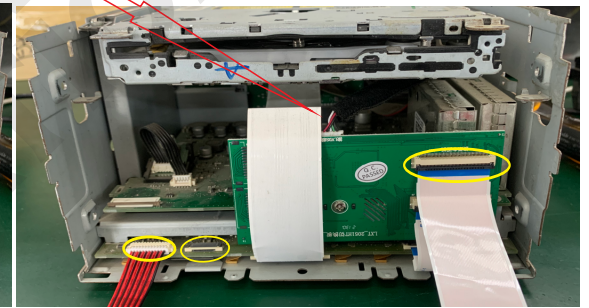
PIN 1	OFF / ON	NG / NG
PIN 2	OFF / ON	NG / Touch point coordinate correction, and then turn "OFF"
PIN 3	OFF / ON	NG / Bentley & Phaeton & RNS510 Radio
PIN 4	OFF / ON	Reversing gridline/Enable 360 panoramic
PIN 5	OFF / ON	NG / NG
PIN 6	OFF / ON	Rear view camera CVBS input / RGB input
PIN 7	OFF / ON	NG / NG
PIN 8	OFF / ON	After market rear view camera/Original rear view camera



1). After disassembling the panel, cover and the screws of the original engine, install the copper column in the position specified in the figure.



2). Insert the 50PIN and on the switching board with the original headunit, fix the switching board with the screws removed from the original headunit, and then insert the LVDS line and pay attention to the outlet position. The movement and upper cover are then installed, as shown above.



3). Insert the three lines of the original headunit's panel (50PIN FPC/12PIN/SD card cable). Then restore the panel of the headunit.

## 7. Safety Warning

- 1. In order to protect driving safety and avoid breaking the traffic laws, please do not watch any external video source while driving. This can be very dangerous and can be illegal.**
  - 2. DO NOT install this system in a wet or damp environment to avoid electrical shock, damage to the system or possible fire caused by a short circuit.**
  - 3. This is a backup camera system designed to give you a view of your rear. This DOES NOT ELIMINATE accidents. In case of an accident, you'll need to contact your local body shop for repairs. Car Integrations is not responsible for accidents caused.**
  - 4. We recommend professional installation when installing vehicle integration systems. Please leave it to the pros to avoid damaging your vehicles interior or electrical system.**
  - 5. After installation, please re-test by turning the vehicle off, back on and into reverse, then back off. This will assure that the system is triggering as it should at all times.**
  - 6. Make sure to re-assemble the vehicle correctly and secure the module itself to avoid the components from getting knocked loose while driving. Make sure all the cables are tucked away and secure and the module is insulated to avoid any short circuits.**
  - 7. DO NOT unplug the LVDS cables while the vehicle is ON. This may short circuit the module of the command system. It's always best to test the system before re-assembling the components. During testing, you should have the vehicle OFF and not ON or in ACC mode to avoid any short circuits.**
-

## 7. Camera Installation

**\*\* BEFORE FULLY COMMITTING TO MOUNTING THE CAMERA, IT'S ALWAYS BEST TO TEST THE CAMERA ANGLE TO MAKE SURE IT'S CENTERED AND YOU HAVE THE DESIRED VIEWING ANGLE \*\***

1. Our cameras require 12 V of power using an ignition, accessory or our module as a power source. Do not use a reverse light as this will not be enough power to run the camera.
2. Flush mount cameras have an RCA extension cable with power leads on both ends. That's designed to run the camera power from the rear to the front where you can connect it to a power source. Connect the RED of the camera's power harness to the RED of the RCA extension cable and run the RCA extension cable through the trim to the front. From there, connect the RCA to the module and the RED lead to a power source.
3. Tailgate handle cameras ONLY require ONE of the RED leads to connect to a power source. There are RED leads on both ends of the RCA extension cable. You will only need to connect ONE of those leads to a power source and tape off the other lead to avoid any static interference.

## Customer Service

At Emerald we want to make sure that you are completely satisfied, therefore we have assembled qualified associates to assist you. Our normal operating hours are Monday - Thursday 9:00 AM - 5:00 PM and Friday 9:00 AM - 4:00 PM (Pacific Standard Time).

Call us Toll Free: 844-333-3903

Email us: [support@emeraldintegrations.com](mailto:support@emeraldintegrations.com)

## Returns

### 30-Day Money-Back Guarantee

At Emerald Integrations, we want to make sure that you are completely satisfied. If for some reason you aren't happy with an item on your order and want to return it, we make returns and refunds extremely simple.

Any complete, like-new item returned within 30-days can be returned for a full refund less the original cost of shipping. All items or packages shipped free of charge will be subject to a \$15.00 shipping fee. If returned items are not in like-new condition, then Emerald Integrations may refuse a return or charge a restocking fee of 10% - 20%. Items not in like-new condition include, but are not limited to: items missing original item packaging, opened software or media items, used items, installed items, abused or physically damaged items, items missing parts, items damaged due to improper return shipping, items with a different serial number or defaced serial number, pre-cut wire, made-to-order items and special order items. All returns must be shipped back in a shipping carton, items cannot be shipped back in product boxes. Should you have any questions about our return procedure, please don't hesitate to contact us.

### Return Disclaimer

Any unauthorized, improperly packaged, or non-insured packages will be returned to sender. Items that show signs of wear or have been, scratched, altered, or damaged in any way cannot be accepted for return

## Warranty

Emerald Integrations understands that there are minor chances that electronics can fail and defects happen, in the event that this occurs, Emerald Integrations is here to help you quickly resolve your defect for a full year of 1-Year Warranty Coverage. Unlike others who push you to a manufacturer service center that can be slow and unresponsive, we're here to help with the repair or replacement you need. To begin the process, follow the instructions on the returns page at [www.emeraldintegrations.com/returns](http://www.emeraldintegrations.com/returns).

The terms of the warranty are subject to the specific manufacturer and all expressed and implied warranties are provided solely by the manufacturer. Every item approved for a warranty claim is inspected by our team of qualified experts and professionally tested.

Emerald Integrations is a retail and wholesale distributor of vehicle electronic components, specializing in car safety. Emerald tests each product individually to ensure optimal performance and is NOT responsible for any negligence or damages caused by the installation process. Should a customer request assistance in finding an installer, Emerald holds no liability for any installers recommended by Emerald, it's employees or affiliates.